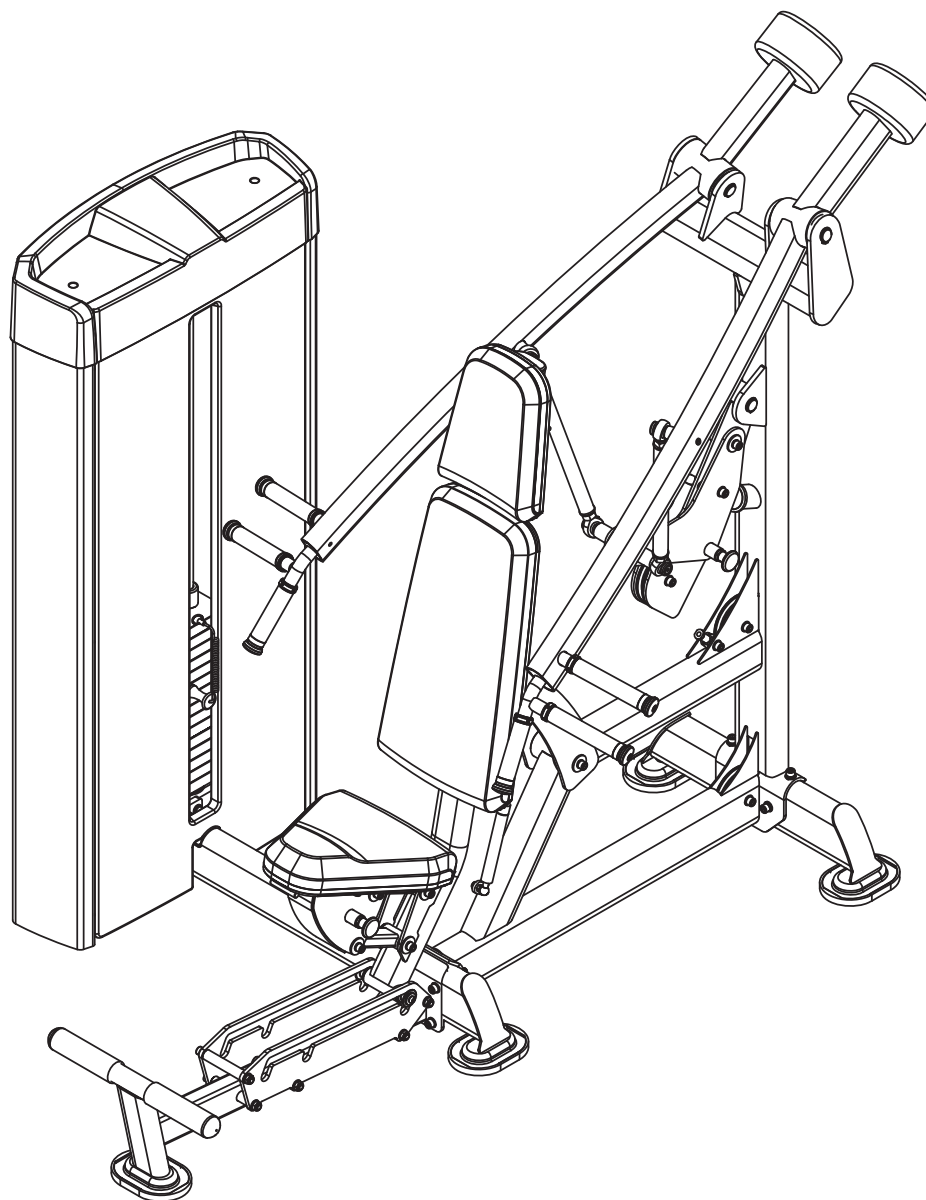


# OWNER'S MANUAL

## CHEST PRESS / SHOULDER PRESS



### CAUTION

Please read all instructions in this manual before use the equipment and keep the manual well.



# Cautions

In order to avoid human injuries and property damages, before the use of this series equipment, please read the following important notices.

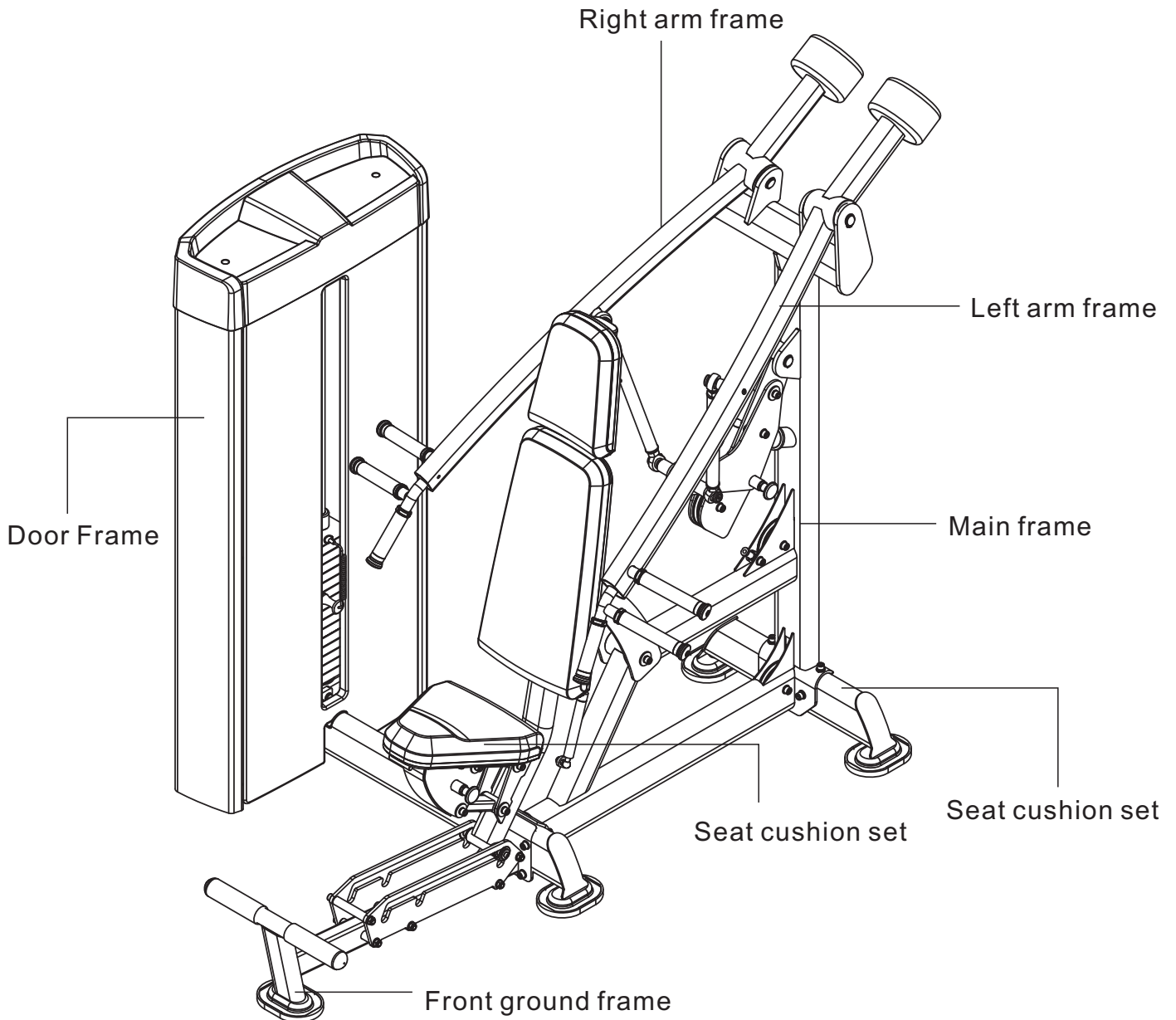
1. Before use of the equipment please read this Owner's Manual carefully. The equipment should be assembled and used strictly following the relevant instructions in this manual, and can not change any of its components or disassemble it freely.
2. It should be ensured that all users have been fully aware of the safety warnings and precautions before they exercise on the equipment.
3. Too loose-fitting clothing can not be worn, and sports shoes should be put on while exercising.
4. The equipment should be carefully examined before training. If there is damage, please do not use it and do not try to repair it by yourself. Please contact your supplier in time. It is necessary to inform after-sales service personnel as soon as possible to get the machine repaired.
5. Make sure the selector pin has fit well in its position before exercising and do not use selector pin other than the one coupled with this equipment to avoid any injury.(Apply to single station with cable)
6. The equipment should be placed indoors, and make sure that the ground is flat, and there are enough space around the equipment for user to exercise on the machine freely.
7. Before using the machine, please check the cables to ensure that cable is in the groove of pulley, and attention should be paid especially to the end of cable. (Apply to single station with cable)
8. Only originally attached or manufacturer provided weight stack can be used in this

equipment and can not increase the weight of weight stack by use of other manufacturers, weight stack plate. (Apply to single station with cable)

9. Child and pet are not allowed to be too close to the equipment while it is in using.
10. If exerciser feels dizzy or physical pain while training he or she should stop exercising immediately and consult a doctor.
11. The equipment should be used in a well defined place and under well managed and monitored way of the equipment owner.

Before using the equipment please consult your physician and fitness expert, and must be sure to read all the specifications in this owner's manual. Manufacturer will not be held responsible for any personal injury and property loss resulted from the incorrect use of the products.

# Equipment Schematic



## Fitting instructions

1. When strip off the wrappage around the surface of equipment, should be careful, do not hurt the machine with knife scratches on the surface.
2. When moving this equipment, a sufficient number of personnel should be used to prevent the equipment from collision, or to avoid the injuries caused by personnel shortage.
3. Prior to installation of the equipment, make sure that all the parts are complete, no missing hardware.
4. When install the equipment, should have two or more persons working together to ensure the accurate location of parts assembly.
5. When install the equipment should pay attention to the assembly instructions to prevent component fitting to a wrong place or some components being omitted.
6. The suitable installation tools should be used to avoid the equipment damages or human injuries caused by the use of inappropriate tools in the installation process.
7. If need to move equipment, the movement must be after the completion of installation. The equipment can not be moved when the installation process hasn't finished or locking nut hasn't been tightened up.
8. Attention should be paid to the sequence of fastening locking nut, when the overall installation of the equipment is not finished, should not tighten up the nut that is being installed. After the whole machine is properly fitted together, the locking nuts can be tightened up one by one.
9. Before installation the cable terminals should be checked to make sure whether they are firm. (Apply to single station with cable)
10. After the completion of installation, start the initial trial of the equipment with gentle

force. Make certain that the equipment is without any abnormality before normally use the machine. If something unusual is found with the equipment that, it is necessary to check the equipment carefully, identify the problems and reinstall it.

## Warranty

\*Ten years: Main Frames

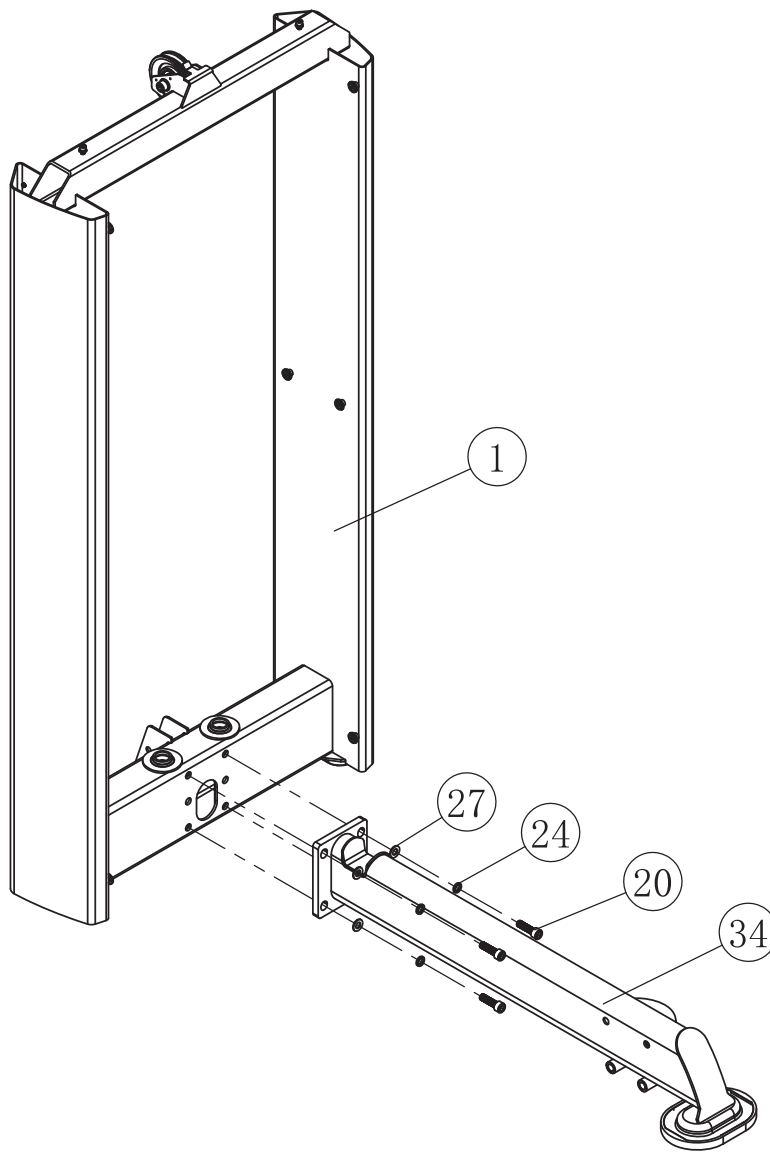
\*One year: Bushings, Pivot bearings, guide rods, Weight plate, cams, swivel welding parts, Pull-pin components

\*Half year: Finish, rubber grips, belt, cables.

\*Three Months: upholstery

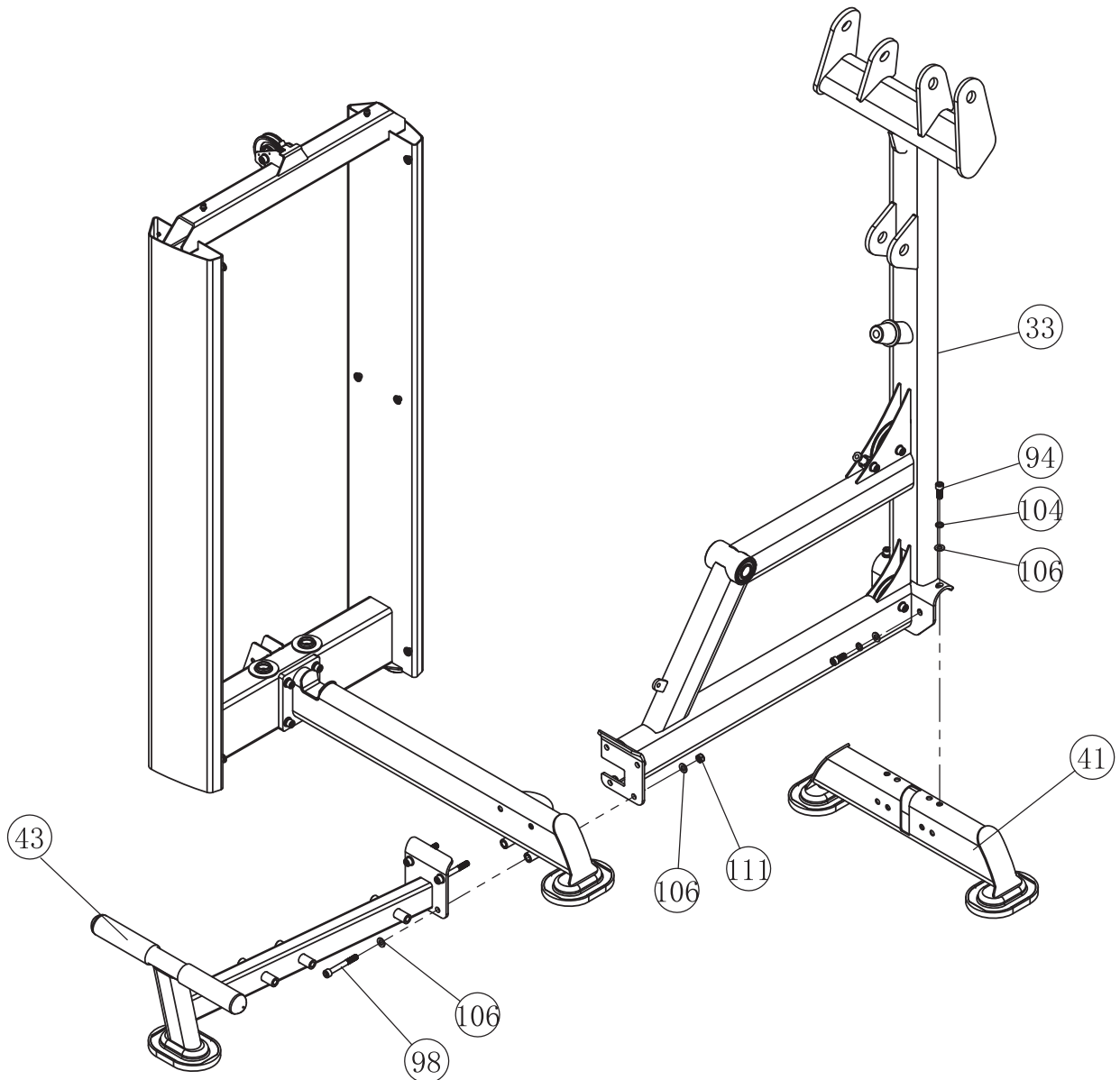
# Assembly step 1

Step	No.	Description	Specifications	Qty
1	1	Door Frame		1
	20	Inner Hexagon Socket Head Bolt	M10*35	4
	24	Spring washer	M10	4
	27	Flat washer	$\Phi 20 \times \Phi 10.5 \times 2$	4
	34	Connect frame		1



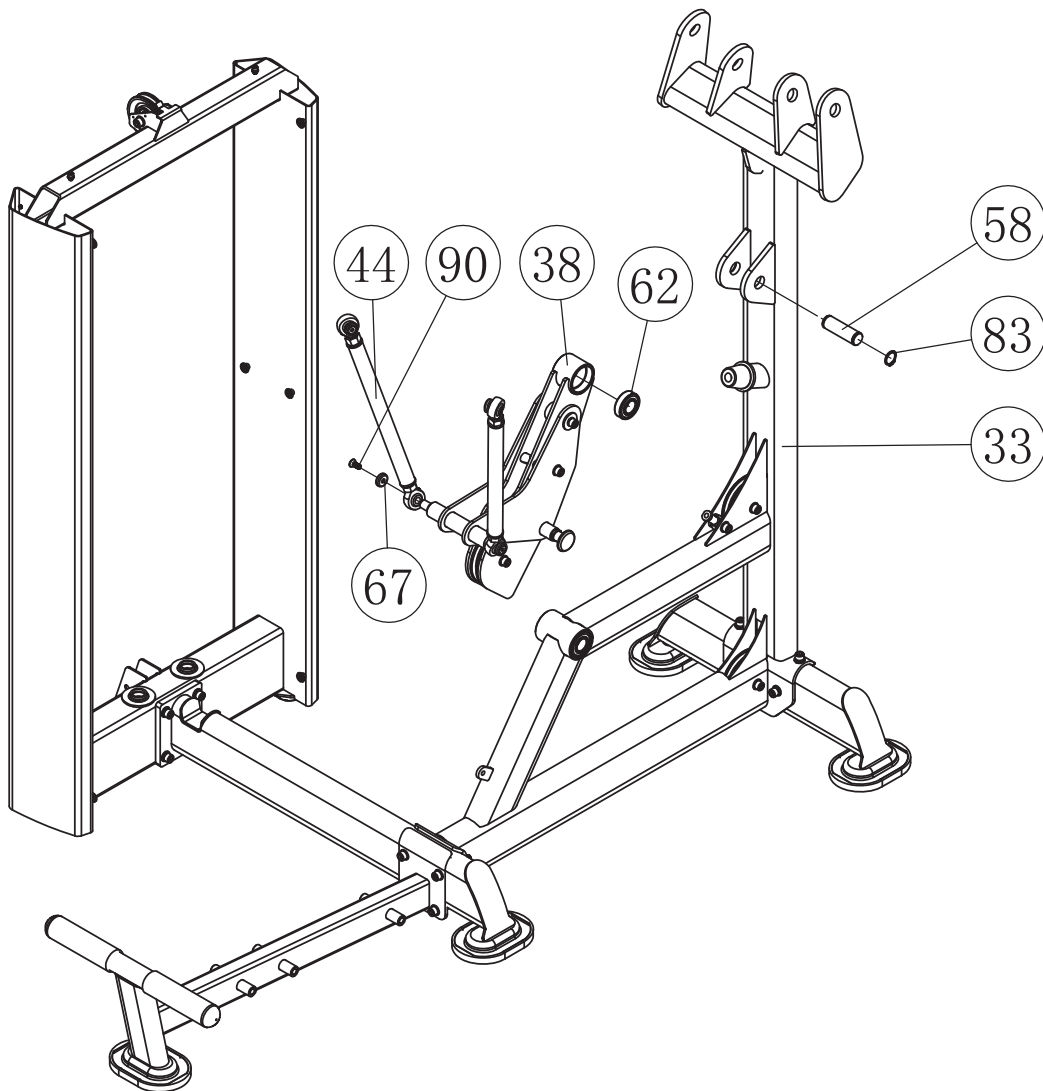
# Assembly step 2

Step	No.	Description	Specifications	Qty
2	33	Main frame		1
	41	Rear ground frame		1
	43	Front ground fame		1
	94	Socket cap screw	M10*25	4
	98	Socket cap screw	M10*80	4
	104	Spring washer	M10	4
	106	Flat washer	Φ20*Φ10.5*2	8
	111	Nut	M10	4



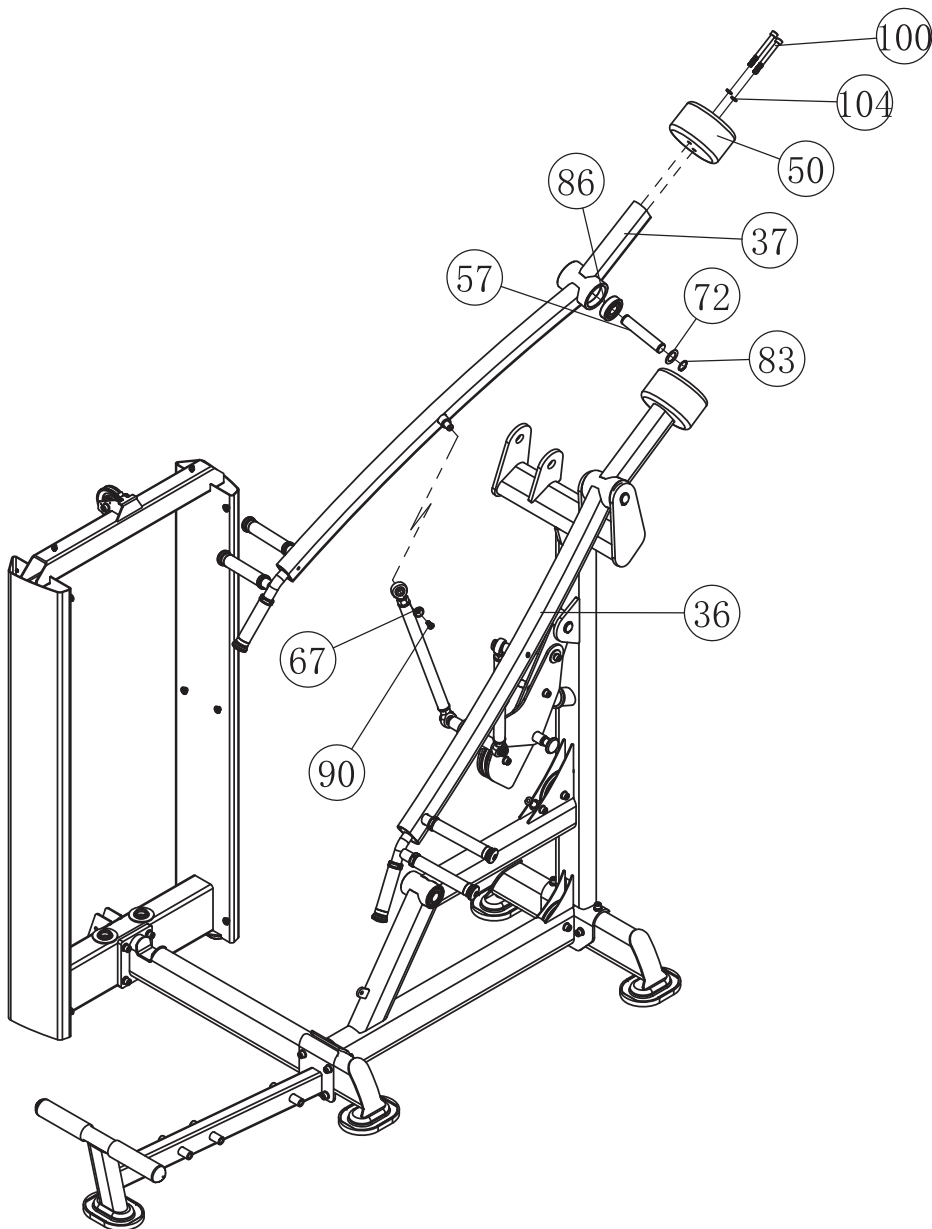
# Assembly step 3

Step	No.	Description	Specifications	Qty
3	33	Main frame		1
	38	Rotating frame		1
	44	Conect rod		2
	58	Short shaft		1
	62	Step rolling bearing		2
	67	Sink hole gaskets		2
	83	Circlip for shaft	d0=25	2
	90	Countersunk head hexagon socket screws	M8*20	2



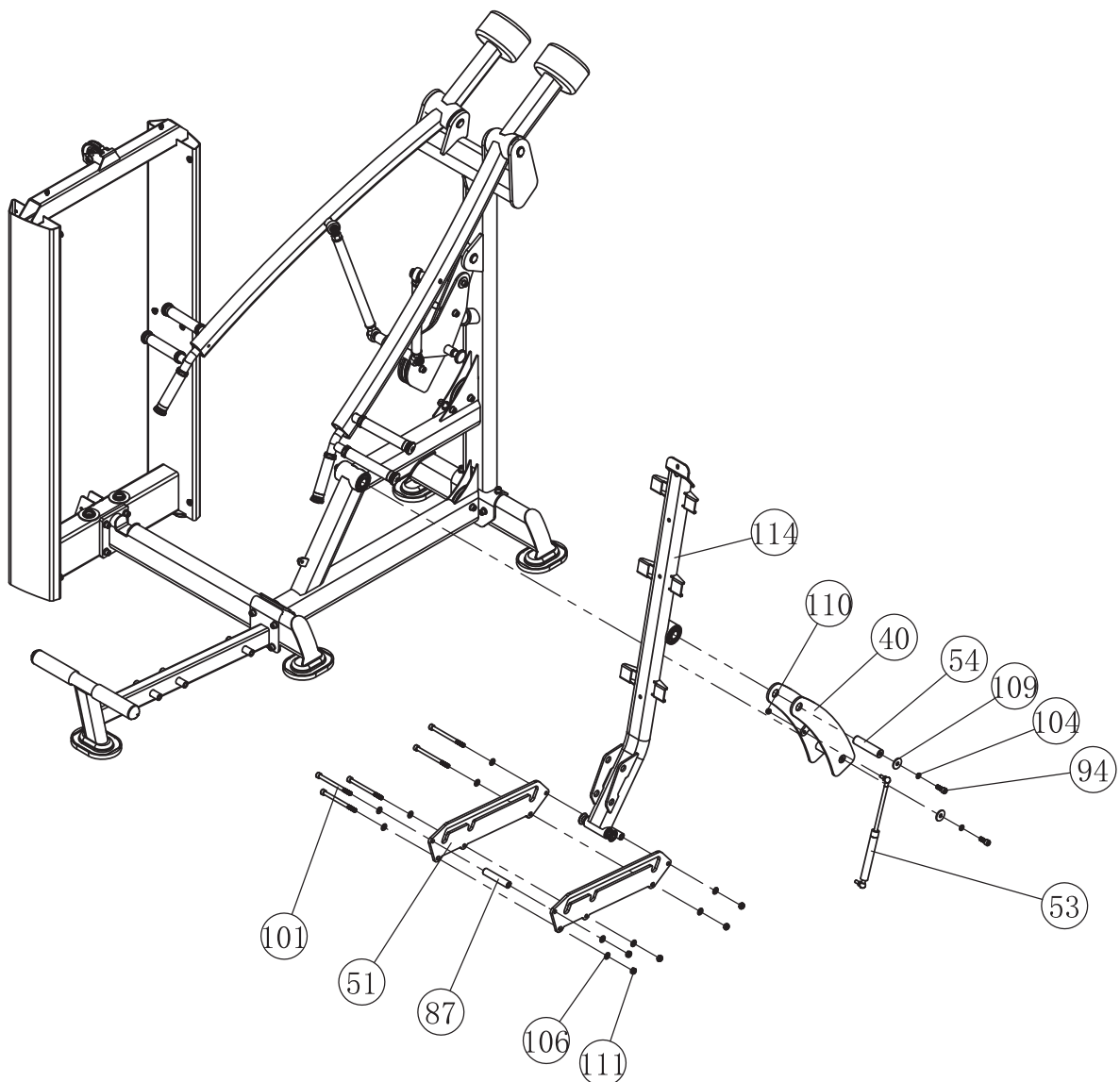
# Assembly step 4

Step	No.	Description	Specifications	Qty
4	36	Left arm frame		1
	37	Right arm frame		1
	50	Counter weight		2
	57	Long shaft		2
	67	Sink hole gaskets		2
	72	Plastic pad		4
	83	Circlip for shaft	d0=25	4
	86	Deep groove ball bearing	6305-2Z	4
	90	Countersunk head hexagon socket screws	M8*20	2
	100	Socket cap screw	M10*95	4
	104	Spring washer	M10	4



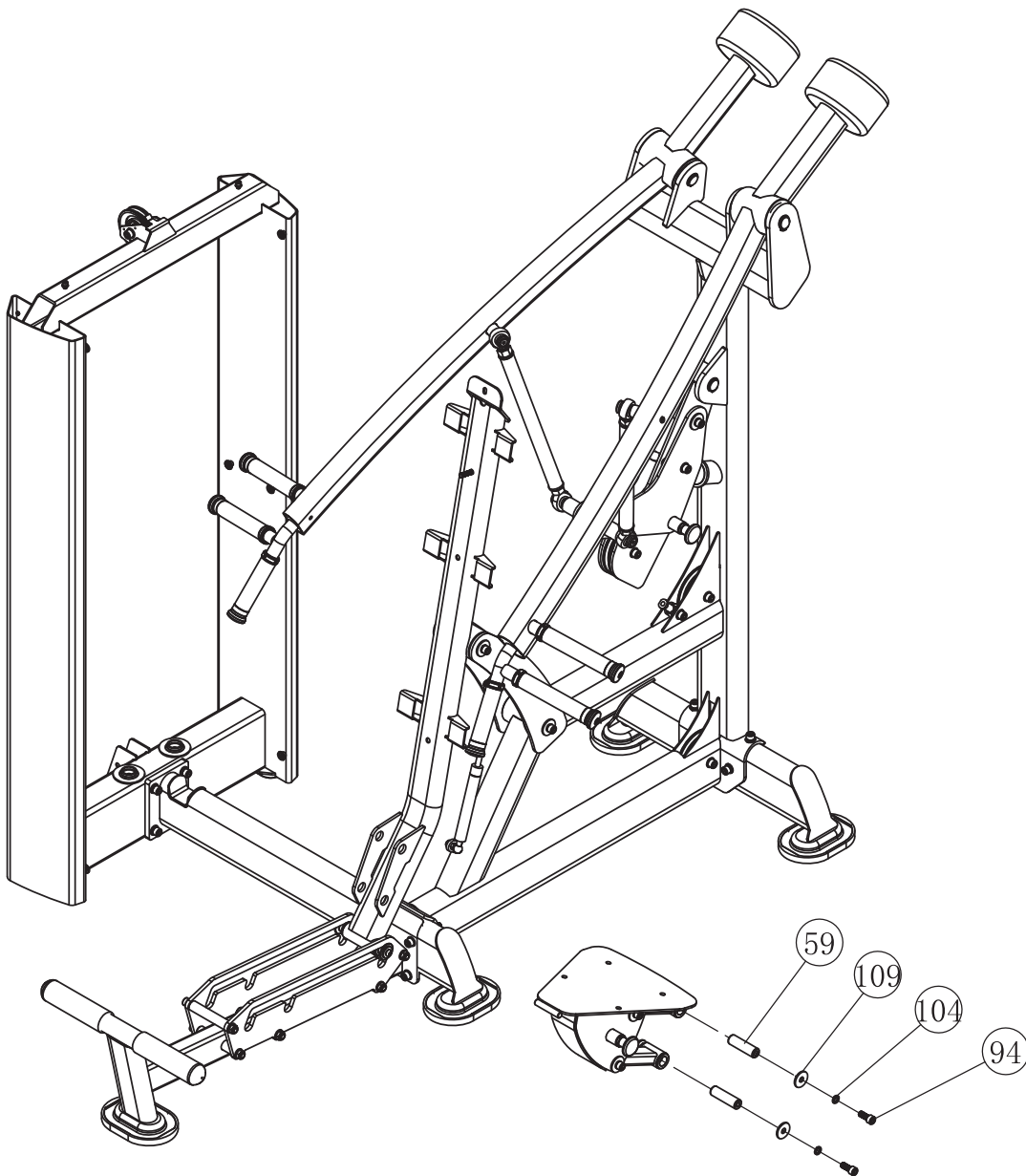
# Assembly step 5

Step	No.	Description	Specifications	Qty
5	40	Support frame		1
	51	Adjusting plate		2
	53	Gas spring cylinder		1
	54	Rotating shaft		2
	87	Connect sleeve		2
	94	Socket cap screw	M10*25	4
	101	Socket cap screw	M10*130	5
	104	Spring washer	M10	4
	106	Flat washer	$\Phi 20 \times \Phi 10.5 \times 2$	10
	109	Extra big washer	$\Phi 34 \times \Phi 11 \times 3$	4
	110	Nut	M8	2
	111	Nut	M10	5
	114	Cushion frame		1



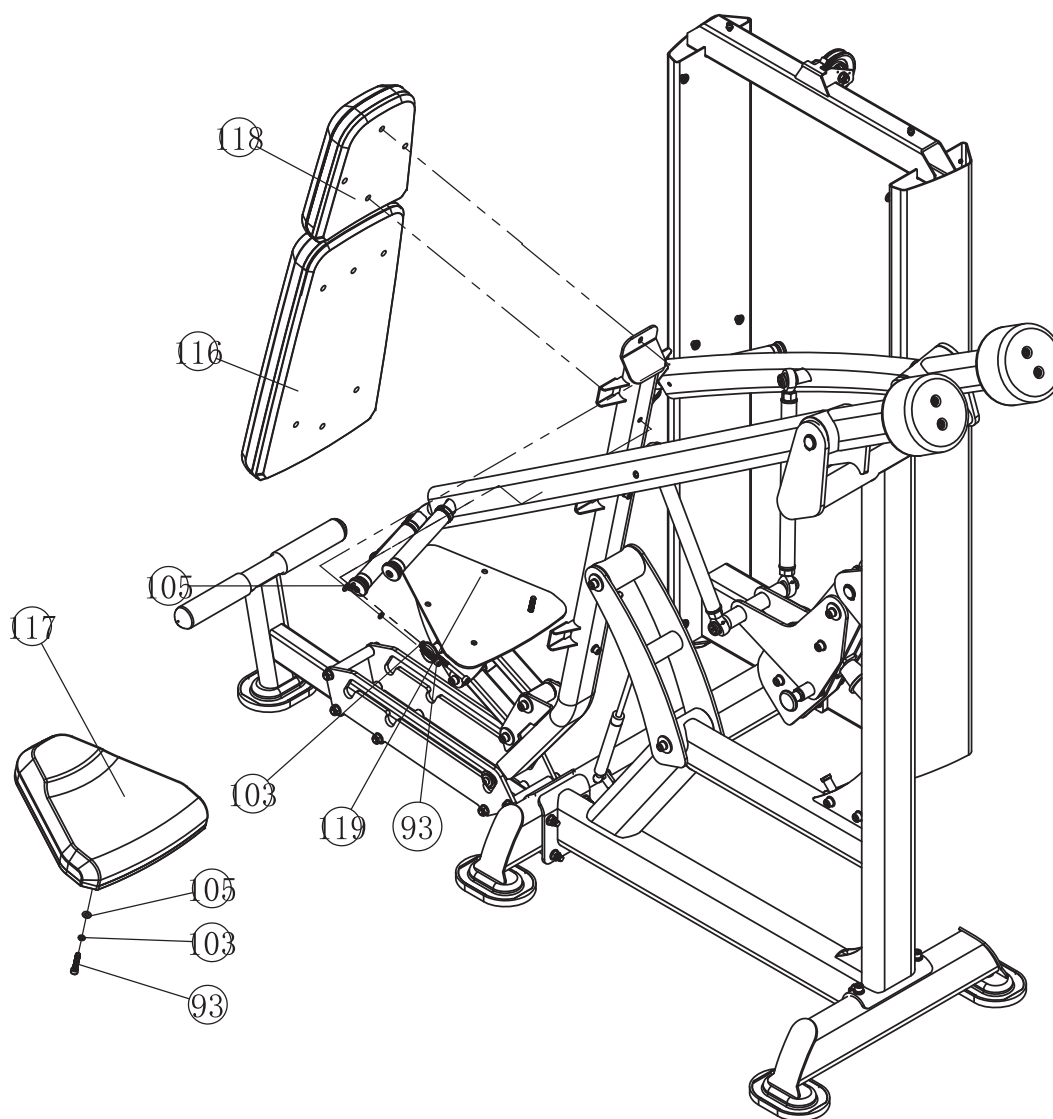
# Assembly step 6

Step	No.	Description	Specifications	Qty
6	59	Small rotate shaft		2
	94	Socket cap screw	M10*25	4
	104	Spring washer	M10	4
	109	Extra big washer	$\Phi 34*\Phi 11*3$	4
	115	Seat pad frame		1



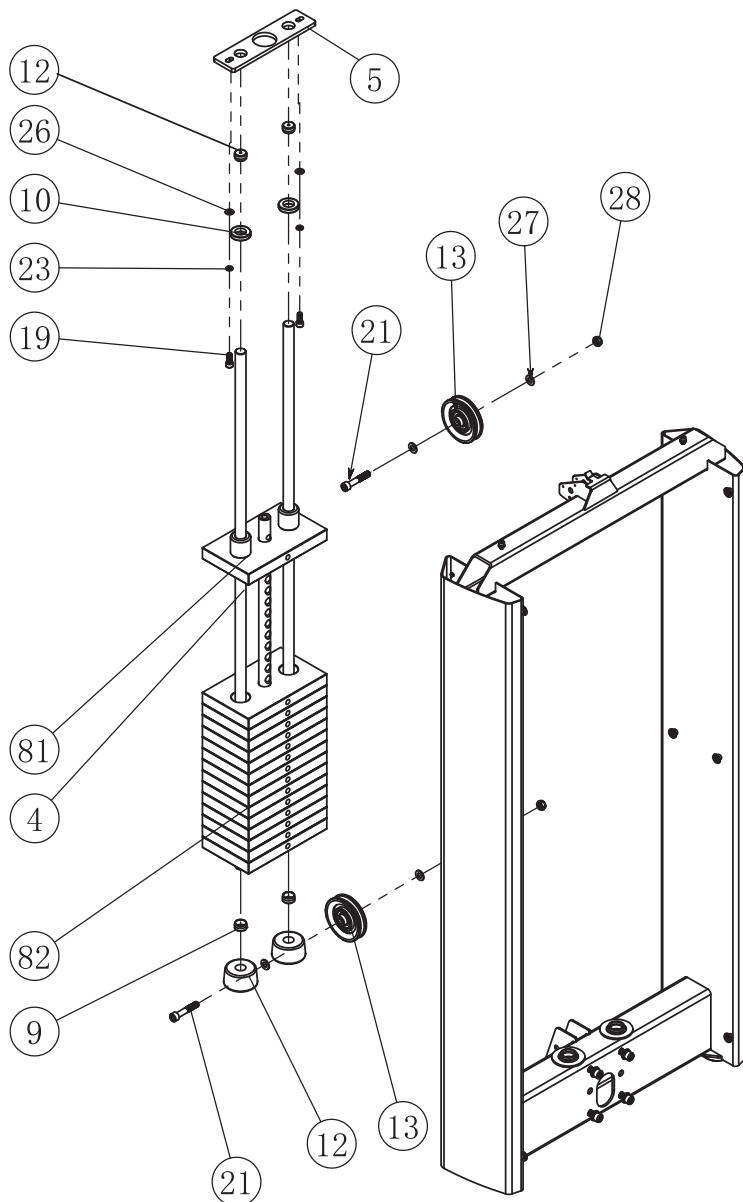
# Assembly step 7

Step	No.	Description	Specifications	Qty
7	93	Socket cap screw	M8*70	5
	103	Spring washer	M8	8
	105	Flat washer	Φ16*Φ8.4*1.6	8
	116	Back cushion set		1
	117	Seat cushion set		1
	118	Head pad set		1
	119	Socket cap screw	M8*75	3



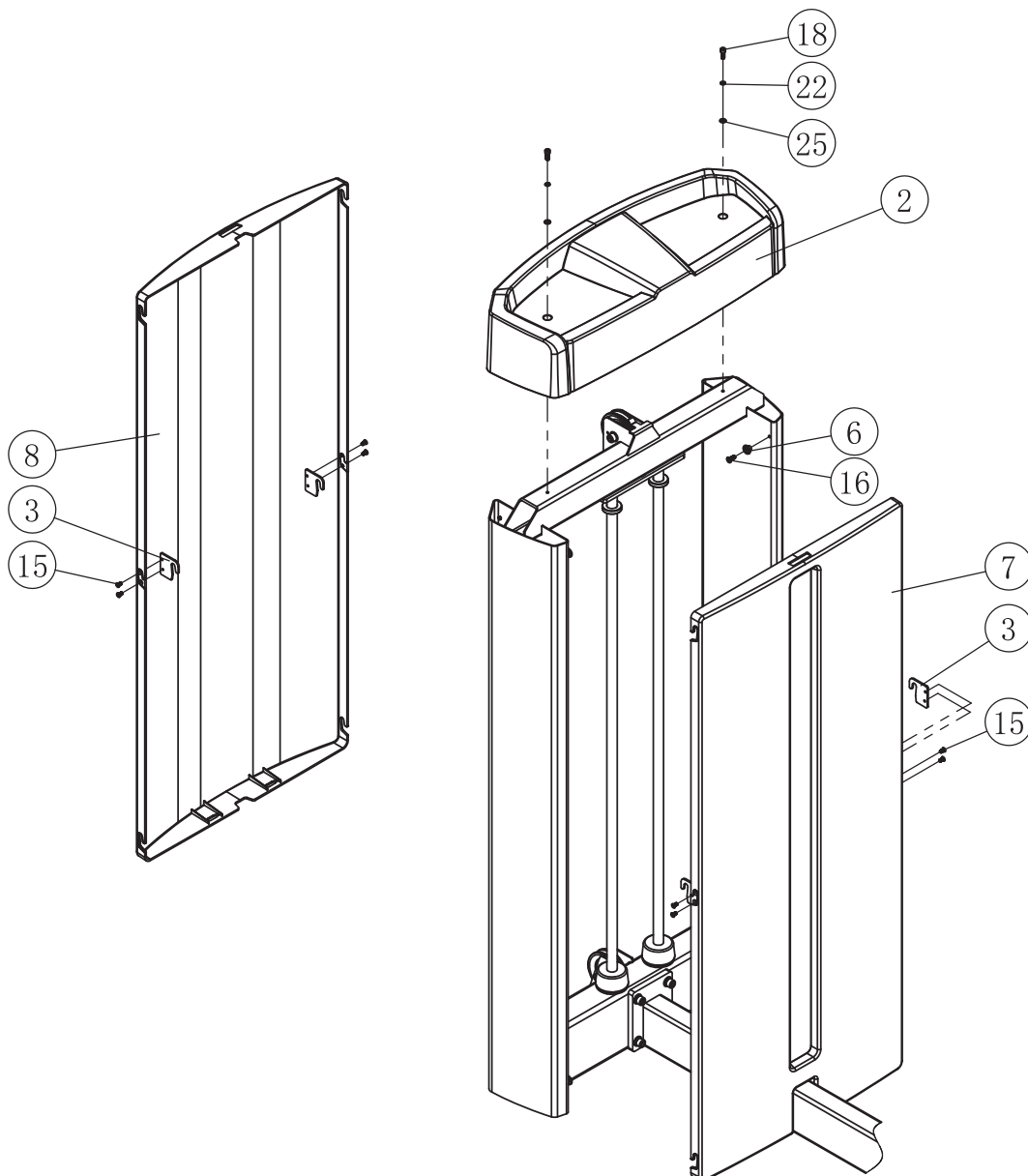
# Assembly step 8

Step	No.	Description	Specifications	Qty
8	4	Guide rod		2
	5	Guide rod fixed plate		1
	9	Rubber bumper	$\phi 64 * \phi 32 * \phi 20 * 35$	2
	10	Rubber bumper	$\phi 38 * \phi 21 * 10$	2
	12	Rod end cover		4
	13	Pulley sets	$\phi 89 * 32$	2
	14	Selector pin		1
	19	Inner Hexagon Socket Head Bolt	M8*20	2
	21	Inner Hexagon Socket Head Bolt	M10*55	2
	23	Spring washer	M8	2
	26	Flat washer	$\Phi 16 * \Phi 8.4 * 1.6$	2
	27	Flat washer	$\Phi 20 * \Phi 10.5 * 2$	4
	28	Nylon nut	M10	2
	81	10 lb counter weight set		1
	82	10 lb counter weight set		14

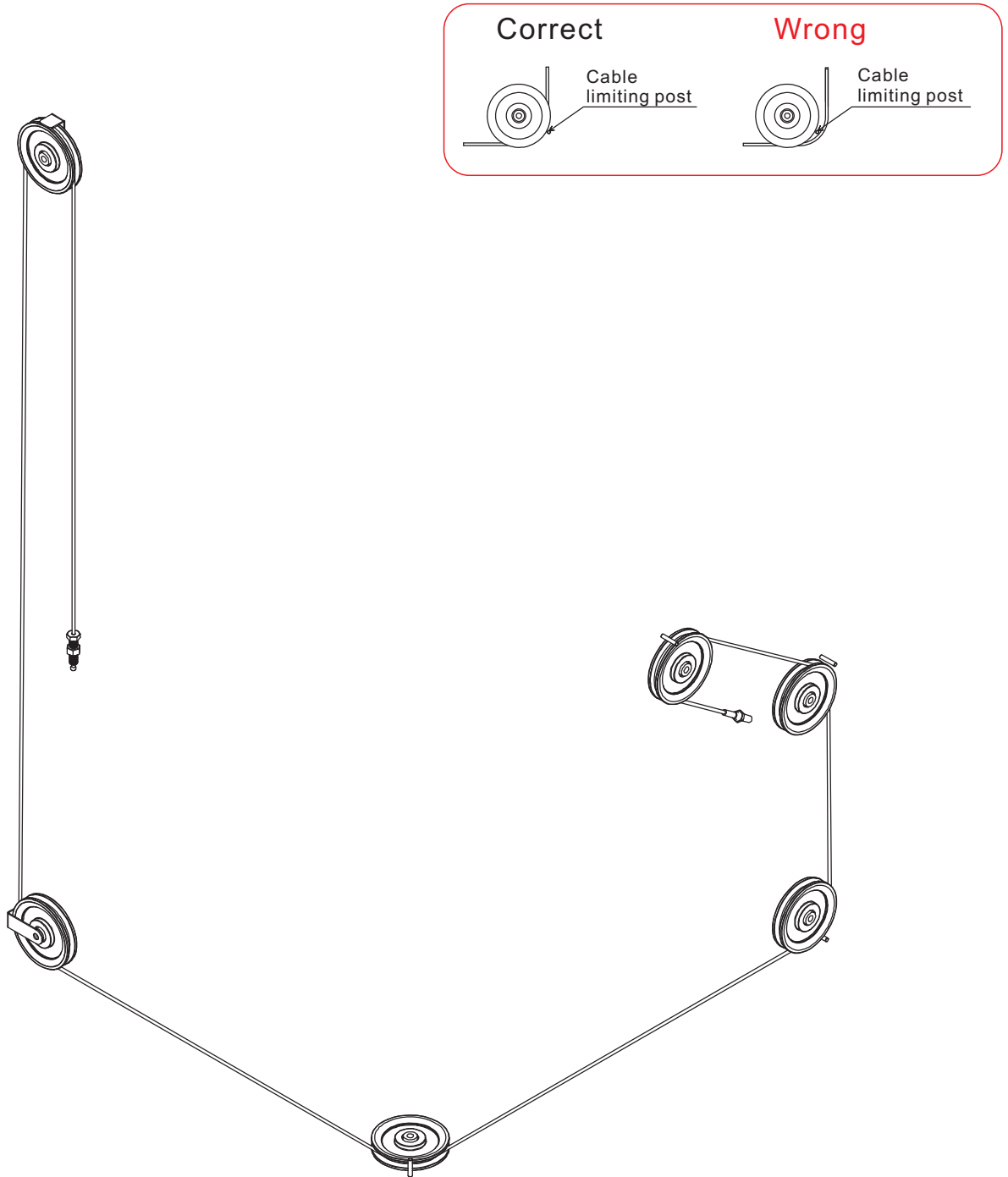


# Assembly step 9

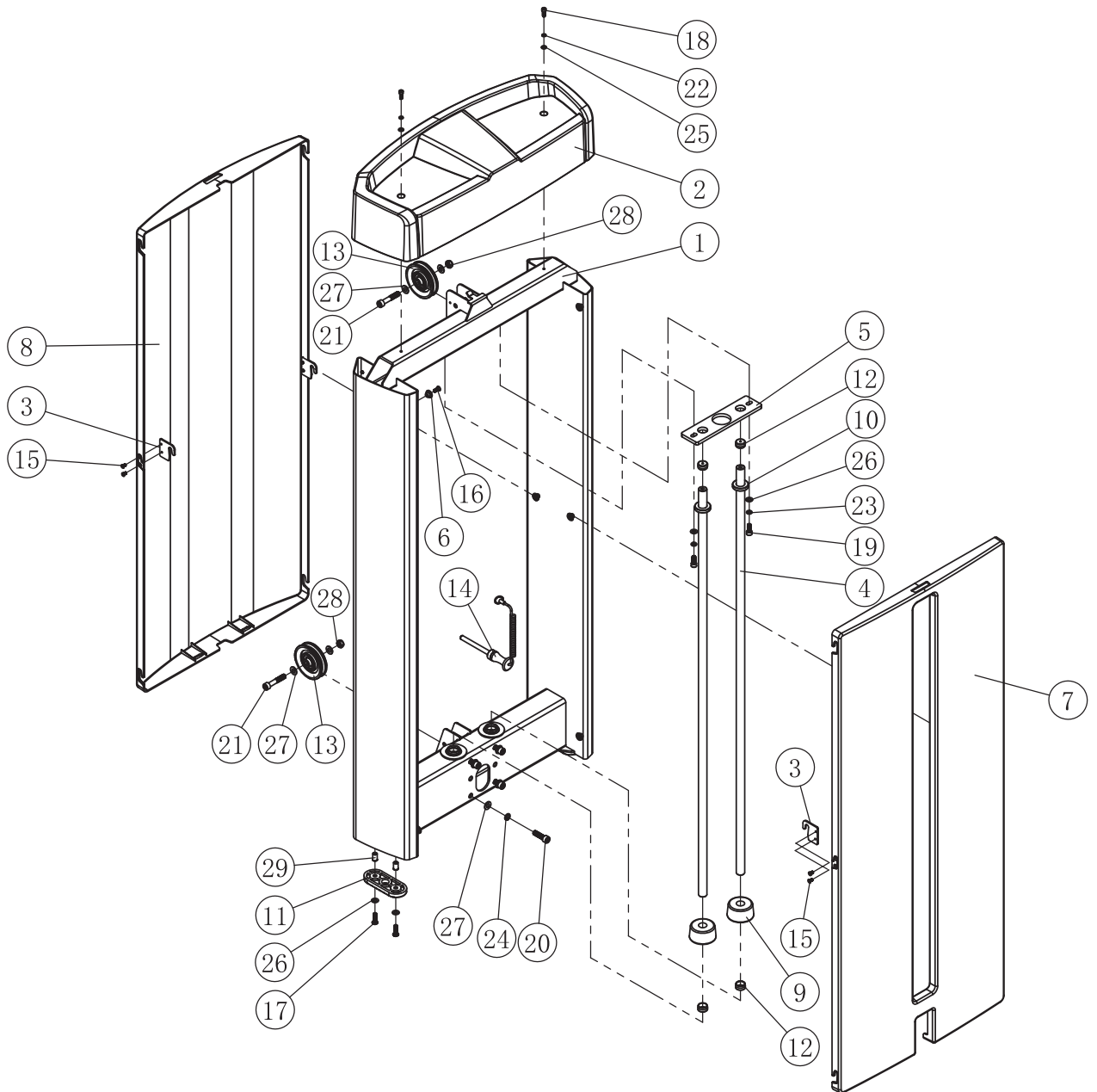
Step	No.	Description	Specifications	Qty
9	2	Upper shield		1
	3	Shield fixed plate		4
	6	Fixed bushing		12
	7	Front shield		1
	8	Back shield		1
	15	cross recessed countersunk head screw	M5*10	8
	16	Countersunk head hexagon socket screw	M6*16	12
	18	Inner Hexagon Socket Head Bolt	M6*16	2
	22	Spring washer	M6	2
	25	Flat washer	Φ12*Φ6.4*1.6	2



# CABLE ROUTING DIAGRAM



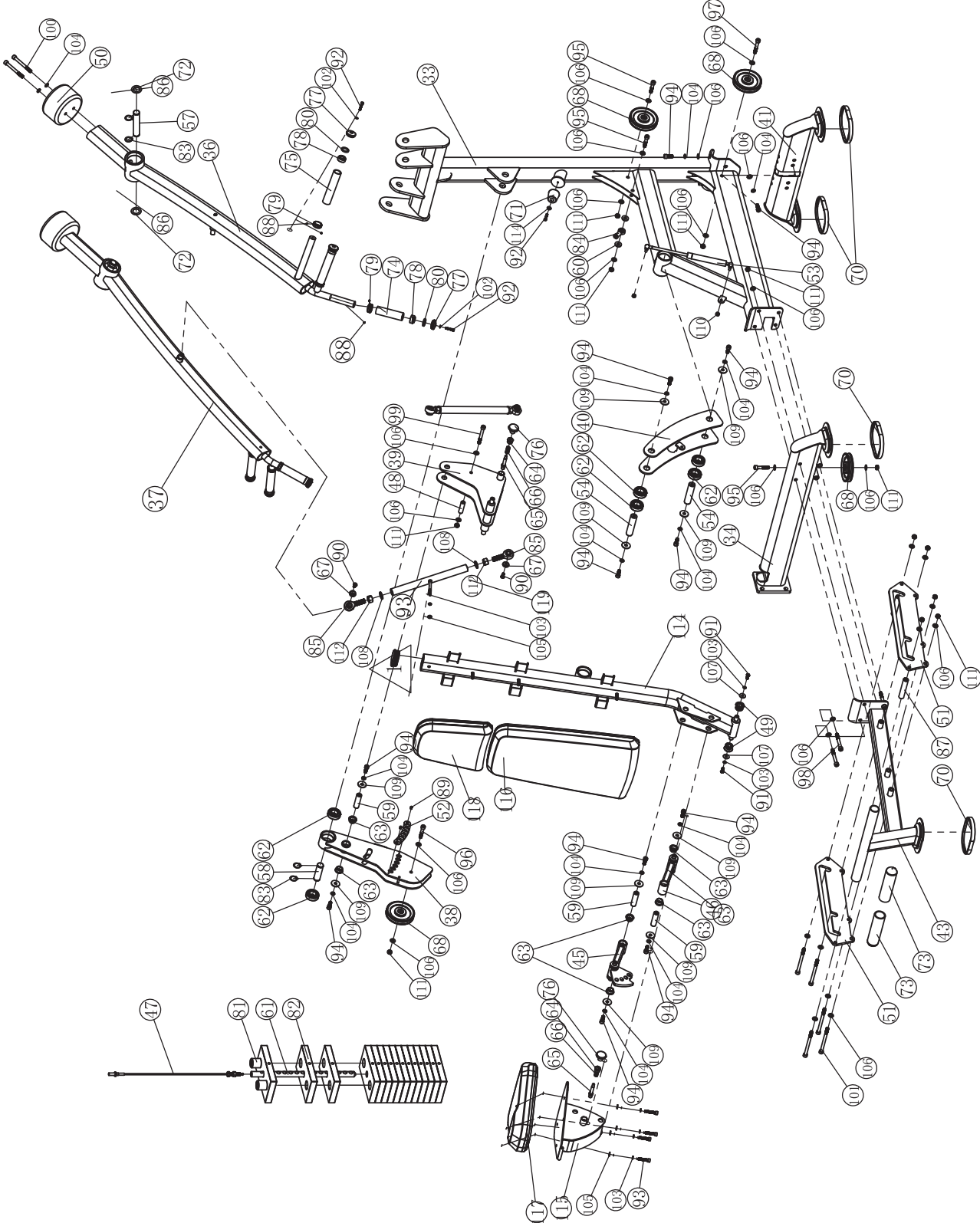
# Exploded View



# Exploded List

No.	Description	Specifications	Qty
1	Doorframe		1
2	Upper shield		1
3	Shield fixed plate		4
4	Guide rod		2
5	Guide rod fixed plate		1
6	Fixed bushing		12
7	Front shield		1
8	Back shield		1
9	Rubber bumper	$\phi 64 * \phi 32 * \phi 20 * 35$	2
10	Rubber bumper	$\phi 38 * \phi 21 * 10$	2
11	Floor cushion		2
12	Rod end cover		4
13	Pulley sets	$\phi 89 * 32$	2
14	Selector pin		1
15	cross recessed countersunk head screw	M5*10	8
16	Countersunk head hexagon socket screw	M6*16	12
17	Inner Hexagon Mushroom Head Bolt	M8*25	4
18	Inner Hexagon Socket Head Bolt	M6*16	2
19	Inner Hexagon Socket Head Bolt	M8*20	2
20	Inner Hexagon Socket Head Bolt	M10*35	4
21	Inner Hexagon Socket Head Bolt	M10*55	2
22	Spring washer	M6	2
23	Spring washer	M8	2
24	Spring washer	M10	4
25	Flat washer	$\Phi 12 * \Phi 6.4 * 1.6$	2
26	Flat washer	$\Phi 16 * \Phi 8.4 * 1.6$	6
27	Flat washer	$\Phi 20 * \Phi 10.5 * 2$	8
28	Nylon nut	M10	2
29	Rivet nut with small countersunk head	M8*18	4
30			
31			
32			
33			
34			
35			
36			
37			
38			
39			
40			
41			
42			

# Exploded View



# Exploded List

No.	Description	Specifications	Qty
33	Main frame		1
34	Connect frame		1
36	Left arm frame		1
37	Right arm frame		1
38	Rotating frame		1
39	Adjusting frame		1
40	Support frame		1
41	Rear ground frame		1
43	Front ground frame		1
44	Conect rod		2
45	Cushion adjusting frame		1
46	Cushion connect frmae		1
47	Cable set		1
48	Limit drivepipe		1
49	Rotating sleeve		2
50	Counter weight		2
51	Adjusting plate		2
52	Adjusting piece		1
53	Gas spring cylinder		1
54	Rotating shaft		2
57	Long shaft		2
58	Short shaft		1
59	Small rotate shaft		5
60	Washer		2
61	15 hole select shaft		1
62	Step rolling bearing		6
63	Metallurgy set		10
64	M20 nut		2
65	Adjusting column		2
66	Spring		2
67	Sink hole gaskets		4
68	Pulley set		4
69	Elliptical pipe plug		1
70	Ground rubber pad		4
71	Bumper pad		1
72	Plastic pad		4
73	Handle sleeve		2
74	Handle sleeve		2
75	Handle sleeve		4
76	Knob		2
77	Aluminum plate		6
78	Aluminum ring		6

# Exploded List

No.	Description	Specifications	Qty
79	Aluminum baffle ring		6
80	Plastic ring		6
81	10 lb counter weight set		1
82	10 lb counter weight set		14
83	Circlip for shaft	d0=25	6
84	Rod end joint bearing	SI10E(M10)	1
85	Rod end joint bearing	SA17ES(M16)	4
86	Deep groove ball bearing	6305-2Z	4
87	Connect sleeve		2
88	Set screws with inner hexagon end	M5*5	12
89	Cross recessed countersunk head screw	M5*10	2
90	Countersunk head hexagon socket screws	M8*20	4
91	Umbrella head hexagon socket screw	M8*20	2
92	Socket cap screw	M6*25	7
93	Socket cap screw	M8*70	4
94	Socket cap screw	M10*25	18
95	Socket cap screw	M10*50	3
96	Socket cap screw	M10*55	1
97	Socket cap screw	M10*65	1
98	Socket cap screw	M10*80	4
99	Socket cap screw	M10*85	1
100	Socket cap screw	M10*95	4
101	Socket cap screw	M10*130	5
102	Spring washer	M6	6
103	Spring washer	M8	10
104	Spring washer	M10	22
105	Flat washer	Φ16*Φ8.4*1.6	8
106	Flat washer	Φ20*Φ10.5*2	34
107	Big washer	Φ24*Φ8.4*2	2
108	Flat washer	Φ30*Φ17*3	4
109	Extra big washer	Φ34*Φ11*3	14
110	Nut	M8	2
111	Nut	M10	15
112	Hex nut	M16	4
113	Flat washer	Φ12*Φ6.4*1.6	1
114	Cushion frame		1
115	Seat pad frame		1
116	Back cushion set		1
117	Seat cushion set		1
118	Head pad set		1
119	Socket cap screw	M8*75	4
120			

# Maintenance Attentions

## **Daily Maintenance** (Basic Maintenance)

1. Clean the seat pad, back pad and cushion with warm water and soft cloth in order to avoid the sweat erosion to these component.
2. Clean the frame with warm water and soft cloth.
3. Cleaning chrome plated parts: wipe them with alcohol moistened soft cloth.

## **Monthly Maintenance** (Basic Maintenance)

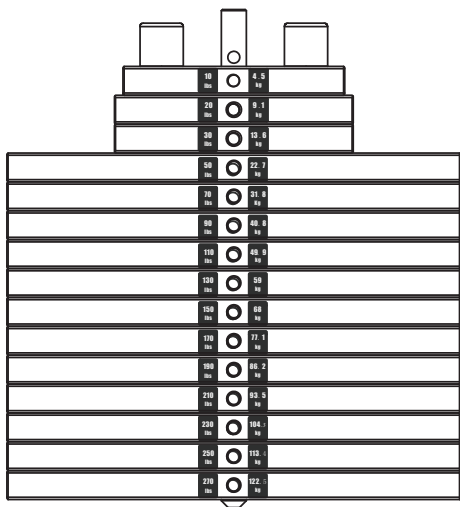
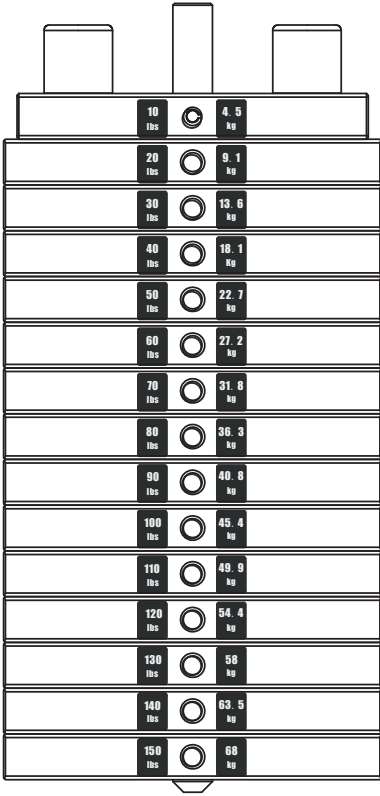
1. Check transmission cable. Check the tightness and abrasion of the cable (disrepair of the surface, bend, distortion and so on). (Apply to single station with cable)
2. Check guide rod, and wipe it with soft duster cloth and alcohol, and lubricate it by anticorrosive oil, but please don't let excessive oil accumulated on rod. (Apply to single station with cable)
3. Check weight stack to know if there is any damaged steel plate which caused by too much force or friction on rod. (Apply to single station with cable)
4. Check pulley on whether its groove surface is clean and whether it runs smoothly. (Apply to single station with cable)
5. Check bolts and fixing parts. Wipe them with alcohol and anticorrosive oil.

## **Further Maintenance**

1. Check whether bolts on basic frame become loose, springs have damaged and the tightness of drive cable.
2. Check, if there is rust or paint loss on main frame and basic rack, clean out rust by sand paper, and then cover it with same color paint from the same supplier.
3. Clean and lubricate every bearing, and keep equipment work smoothly.
4. Check whether the oil cylinder suffers oil leakage.

## **Weight stack label instructions**

1. Wipe front surface of weight stack .
2. Peel off back sheet (adhesive side) from label and make sure that the label remains attached to the application tape.
3. Aline the center hole of label with the weight stack center hole.
4. Line up the first label to hole on top plate.
5. Make sure label is straight and slowly press into place.
6. Gently remove application tape and rub each label firmly against the weight stack.
7. Allow labels to stand for 24 hours to allow adhesive to cure fully.



## Heavy weight stack

10 lbs	<input type="radio"/>	4.5 kg
20 lbs	<input type="radio"/>	9.1 kg
30 lbs	<input type="radio"/>	13.6 kg
40 lbs	<input type="radio"/>	18.1 kg
50 lbs	<input type="radio"/>	22.7 kg
60 lbs	<input type="radio"/>	27.2 kg
70 lbs	<input type="radio"/>	31.8 kg
80 lbs	<input type="radio"/>	36.3 kg
90 lbs	<input type="radio"/>	40.8 kg
100 lbs	<input type="radio"/>	45.4 kg
110 lbs	<input type="radio"/>	49.9 kg
120 lbs	<input type="radio"/>	54.4 kg
130 lbs	<input type="radio"/>	58 kg
140 lbs	<input type="radio"/>	63.5 kg
150 lbs	<input type="radio"/>	68 kg

10 lbs	<input type="radio"/>	4.5 kg
20 lbs	<input type="radio"/>	9.1 kg
30 lbs	<input type="radio"/>	13.6 kg
50 lbs	<input type="radio"/>	22.7 kg
70 lbs	<input type="radio"/>	31.8 kg
90 lbs	<input type="radio"/>	40.8 kg
110 lbs	<input type="radio"/>	49.9 kg
130 lbs	<input type="radio"/>	59 kg
150 lbs	<input type="radio"/>	68 kg
170 lbs	<input type="radio"/>	77.1 kg
190 lbs	<input type="radio"/>	86.2 kg
210 lbs	<input type="radio"/>	93.5 kg
230 lbs	<input type="radio"/>	104.3 kg
250 lbs	<input type="radio"/>	113.4 kg
270 lbs	<input type="radio"/>	122.5 kg

## Heavy weight stack

